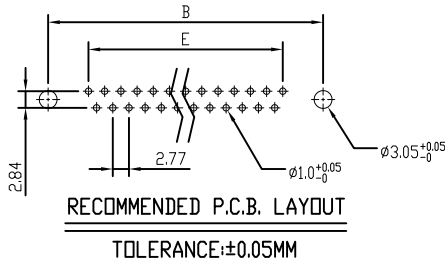
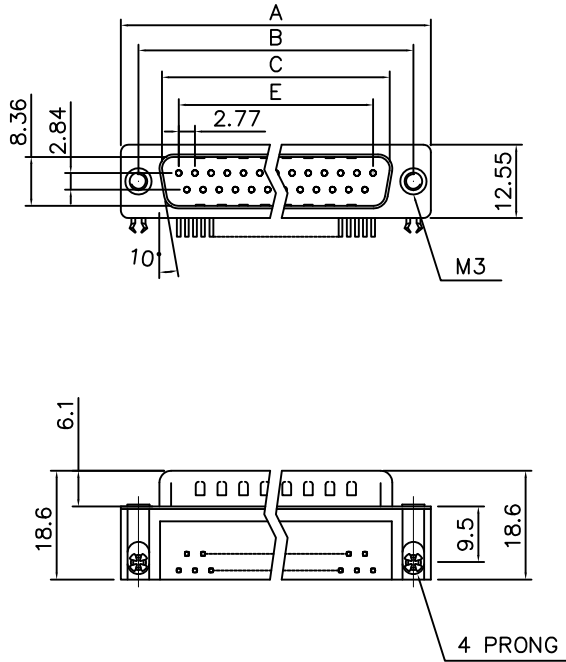


This document is the property of Amphenol Corporation and is delivered on the express condition that it is not to be disclosed, reproduced or used, in whole or in part, for manufacture or sale by anyone other than Amphenol Corporation without its prior consent, & that no right is granted to disclose or to use any information in this document.

Customer Drawing



Dimensions

Shell size	Positions	A	B	C	E
E	9	30.81	24.99	16.92	11.08
A	15	39.20	33.30	25.25	19.39
B	25	53.05	47.04	38.96	33.24
C	37	69.40	63.50	55.42	49.86

REVISIONS

SYM	ECN	DESCRIPTION	DATE	APPROVED
1	HK--	First Release Drawing	04/11/19	IP

D-SUB TECHNICAL DATA

SHELL : Steel, 100u" min tin plated over 50u" min nickel over 50u" min Copper

BODY : PBT UL 94V-0 Color: Black

CONTACTS : Copper Alloy
Gold over 50u" min nickel on mating area.
100u" min tin over 50u" min nickel on solder area.

BOARDLOCK: Copper alloy, Tin plated.

SCREWLOCK: Copper alloy, Nickel plated.

ELECTRICAL : Voltage rating 250 V Rms
Current rating 3A.
Withstanding Voltage >1000 V Rms
Insulation resistance >1000 M Ohms
Contact resistance 25 mOhms max.

MARKING : Amphenol...(Series No.)
Commercial reference
Manufacturing date

PRODUCT CODE

L 777 SD X XX P A4 CH 3R

RoHS Compliant		Mounting option: 4R= Rear insert 4-40
777: tinned shell + dimples for plug		PCB Locking Type: Grounding tabs + boardlock
SD: Standard density		Footprint: A4 (MIL)
Shell size: E, A, B, C		Contact type: P= Pin
Configuration: 09, 15, 25, 37		

UNLESS OTHERWISE SPECIFIED TOLERANCES	APPROVAL	DATE
U.S. METRIC	DRAWN <i>Simon Chen</i>	04/11/19
.X +/- 0.50	CHECKED <i>Tony Tang</i>	04/11/19
.XX +/- 0.30	CHECKED	
.XXX +/- 0.20		
FRACTIONS +/- 5'		
ANGLES +/-		
FOR MATERIALS AND FINISHES SEE NOTES	DRAWING FILE :	
REMOVE SHARP EDGES	ANGLE OF PROJECTION	
DIMENSIONS		
U.S. INCHES		
METRIC MM		

Amphenol

TITLE
D-SUB connector, SD Series

SIZE	DRAWING NO.	REV.
A4	L777SDXXXPA4CH3R	1
SCALE	NONE	SHEET 1 OF 1